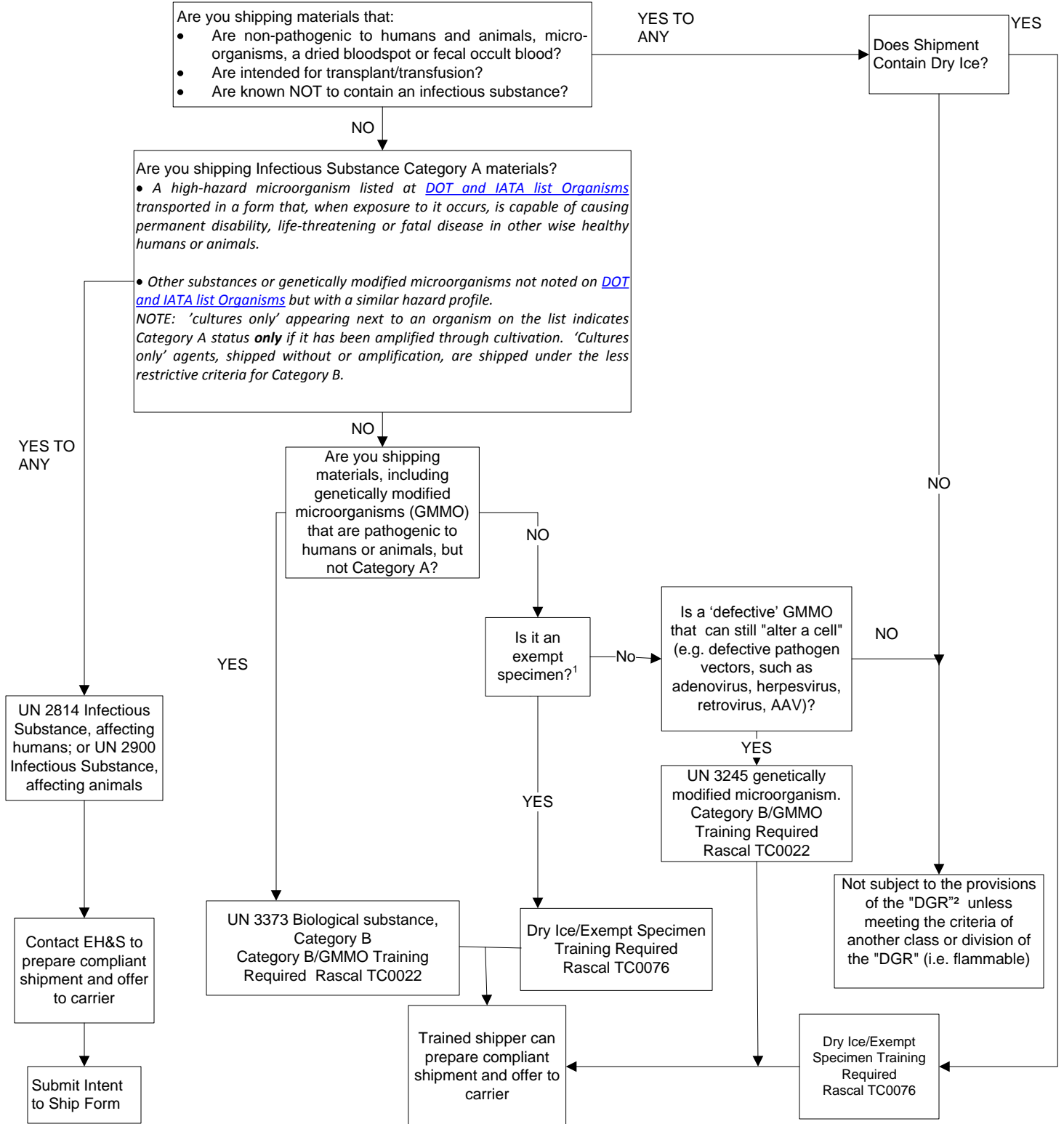


# Classification Flow Chart

*Clinical or research materials, including but not limited to cultures and stocks of microorganisms and human or animal specimens, that may contain pathogenic or non-pathogenic microorganisms.*



1. Human or animal specimen with a minimum likelihood of causing disease. In making such a determination, an element of professional judgment is required. That judgment should be based on known patient medical history, symptoms and individual circumstances of the source, and endemic local conditions.  
 2. DGR = Dangerous Goods Regulations issued by the US Department of Transportation (DOT) and/or the International Air Transport Association (IATA)